

**360 Wilson Drive  
Xenia, OH 45385**

**937-374-5600  
www.gcchd.org**

*From Mark A. McDonnell, R.S., M.S.  
GCCHD Health Commissioner*



As I write this message in early 2013, I look back at all of the accomplishments of the Greene County Combined Health District (GCCHD) and its many community partners in 2012. In the spirit of “It takes a community . . .,” it does take a community and its many government, nonprofit, business and community advocates to provide context and guidance to our Health District to enable it to successfully fulfill its mission.

“Quality of life” is cited by many business magazines as one of the top things businesses want from a community, along with workers with appropriate training and skills. Quality of life includes a healthy environment, good schools and availability of recreational activities. These are all things that Greene County has in abundance.

However, without the participation of all of you, we will not be able to meet our ultimate goal of the healthiest possible community. Here are ten easy changes in your life that will have a big impact on your health:

- Replace soft drinks with water or unsweetened tea. Recent research has indicated that high soda consumption is linked to heart disease, obesity, and Type 2 diabetes.
- Eat one raw fruit or vegetable with every meal and snack. Eat sensibly and watch your portions.
- Find a minimum of 20 minutes each day to exercise. Join a Tai-Chi, Yoga or walking group or your local YMCA. One of the best exercises is walking. Try to work up to 20 minutes in five minute increments over eight weeks. Get outdoors and be active.
- Every time you are out in the sun, wear sunscreen.
- Try to get eight hours of uninterrupted sleep each day.
- Limit your time in front of the television. Instead, develop hobbies, expand your skills or get additional education or training. Think of the new opportunities you will find!
- Plant a garden with things you like to eat. Try new vegetables and new recipes.
- Be social. Volunteer in your community. The benefits you experience will amaze you.
- Do something you enjoy and take care of yourself. Relax and learn to de-stress.
- Visit with your physician at least once a year for a checkup.

All of these recommendations are inexpensive, if not free. The more things you do that can improve your health, the easier it is for both you and your community to be as healthy as possible.

Sadly, this is my last report to the community. I am retiring at the end of June, 2013, after nearly 40 years of public health service. It has been an honor and a privilege to be part of your lives. Be healthy, be happy and take care of yourselves.

*Mark A. McDonnell, R.S., M.S.*

**health** [helth] noun

The general condition of the body or mind with reference to soundness and vigor; soundness of body or mind; freedom from disease or ailment; a polite or complimentary wish for a person's health, happiness, etc., especially as a toast; vigor; vitality.

## *What's Inside*

<b>Administrative Services .....</b>	<b>11</b>
<b>Board of Health Members .....</b>	<b>10</b>
<b>Community Health Services .....</b>	<b>2-3</b>
<b>Development.....</b>	<b>8-9</b>
<b>District Advisory Council.....</b>	<b>10</b>
<b>Environmental Health.....</b>	<b>4-5</b>
<b>Greene Community Health Foundation Officers &amp; Trustees .....</b>	<b>10</b>
<b>Health Education .....</b>	<b>6-7</b>
<b>Vital Statistics.....</b>	<b>10</b>

## *Senior Staff*

### **Health Commissioner**

*Mark A. McDonnell, R.S., M.S.*

### **Medical Director**

*R.P. Dillaplain, M.D.*

### **Administrative Services**

*Aloysius Onuoha, M.B.A., M.H.A.*

### **Community Health Services**

*Robyn Fosnaugh, RN, MPH*

### **Environmental Health**

*Deborah A. Leopold, R.S., B.S.*

### **Health Education & Development**

*Sara T. Pappa, M.A., MCHES*

## *Our Mission*

It is the mission of the Greene County Combined Health District (GCCHD) to protect, promote and improve the health of Greene County residents. The GCCHD will ensure, through an organized community effort:

- A clean and healthy environment,
- The provision of quality medical services,
- The control of communicable diseases,
- Healthier-lifestyle education,
- Preventive health programs, and
- Ongoing community health assessments and the implementation of a strategic plan to address identified needs.



**Director:**  
*Robyn Fosnaugh, RN, MPH*

The Community Health Services (CHS) Division provides health care services through clinics and programs for the community. Most programs are available by appointment. GCCHD accepts Medicaid, some private insurance and private pay including sliding fee scale payments for those who may be under- or uninsured.

## A Healthier Me Program

“A Healthier Me” was created to enhance the health and quality of life of Greene County children by promoting healthy lifestyle behaviors. The program, presented to groups and schools, offers expanded health education through fitness and nutrition activities throughout the communities of Greene County. This year, our Nutritionist worked with child care centers and schools in Greene County to increase nutrition education, access to healthy food choices and physical activity. “Let’s Move Childcare” was implemented in 14 facilities throughout the County and “Eat Smart, Play Hard” was implemented in the Fairborn school district reaching 319 students. “My Plate” was presented to 69 children and 40 adults in Greene County Head Start programs.



“A Healthier Me” collaborates with other Greene County agencies to implement programming. These include Sports Medicine of Greene Memorial

Hospital, area YMCAs, Fairborn and Jamestown summer lunch programs, Greene County schools, Greene County Sheriff’s Department, Community Emergency Response Team (CERT) volunteers and Wright Patterson Air Force Base.

## Bureau for Children with Medical Handicaps (BCMh) Program

BCMh is a tax-supported, state administered program of the Ohio Department of Health (ODH). BCMh links families of children with special health care needs to a network of quality providers and helps families obtain payment for some services their child needs. Special health care issues include those caused by a condition at birth or one that develops after birth. The program is provided by two Public Health Nurses (PHNs) who are registered nurses skilled in assisting families of children with special needs. Assistance is based on medical eligibility of Greene County children up to age 21 that are Ohio residents and who may be without health insurance or Medicaid. A total of 548 children received BCMh home visits in 2012.



## Communicable Disease Control Program

The goals of this program are to control the incidence and spread of communicable disease through effective reporting, treatment and follow-up in Greene County and to provide best practice interventions to the prevention and treatment of specific diseases. A communicable disease is one that can be transmitted from one person to another. Activities of this program include monitoring, tracking and investigating these diseases. The communicable disease PHN is responsible for reporting some diseases to ODH. In 2012, 1,041 communicable diseases were reported to GCCHD. A copy of the Quick

Guide to Reportable Infectious Diseases in Ohio and the Varicella surveillance worksheet was sent to 39 physician offices and 98 school nurses.

## Dental Clinic

Lack of access to dental care remains the number one unmet health need in the Nation. GCCHD houses the only safety net dental clinic in the County. The goal of this program is to provide comprehensive dental care and dental health education to uninsured and underinsured residents. The dental clinic operates three days per week, but for part of the year, the clinic was closed due to the retirement of the dentist. In 2012, 1,320 clients were seen during 2,100 visits. Uninsured clients accounted for 42% of those visits.

The dental team provides dental services for children and adults. Services include:

- Exams & cleanings,
- X-rays,
- Fluoride treatment,
- Sealants & fillings, and
- Extractions.

## Immunization Program

Immunizing children and adults against vaccine-preventable diseases is the goal of this program. People who are under-immunized are often at risk for lost productivity, increased health care costs and potential loss of life. The immunization program includes childhood immunizations as well as those for adults (overseas travel, boosters and influenza).

The Immunization Clinic provided vaccine (non-flu) for 1,622 clients during 2,034 visits in 2012. This is a 6% and 8% increase, respectively. Flu vaccine was given to 729 individuals, age six months to adult. There were 157 clients who received overseas travel vaccines. The PHN provided specialized training for nine medical practices in the County and provided information and education to Women, Infants and Children (WIC) participants, physician offices,

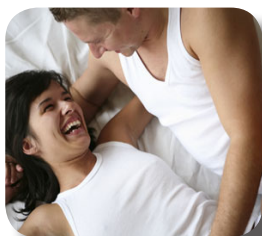




preschools, daycares and Head Start programs. In addition, the annual school nurse appreciation “Lunch and Learn” event was held in May.

## Reproductive Health Screening and Education Program

The purpose of this program is to promote and improve the reproductive health and well-being of women and men and to support them in planning their families. Our Reproductive Life Plan helps clients consider their physical, emotional, and financial preparedness to become a parent. The goals include: offering comprehensive family planning (pregnancy testing, education and counseling); reducing unintended pregnancy by providing effective contraceptives; improving pre-conception and interconception health; decreasing the rates of sexually transmitted infections; decreasing cancer-related deaths and increasing participation of targeted populations. Services are provided based on a sliding fee scale, Medicaid and private insurance. The program provided screening, treatment, education and referral to 484 clients during 835 visits in 2012.



## Social Services

This program is provided by a Licensed Social Worker (LSW) who ensures that GCCHD clients will have basic needs for food, shelter and clothing met. The LSW assesses clients' psychosocial needs, links clients with community resources and facilitates access to medical coverage. Social services are also available to community members who are seeking information or guidance in accessing community resources. In 2012, the LSW received 91 referrals from GCCHD staff and 881 from community partners.

## Child & Adolescent Health Clinic

The Child & Adolescent Clinic provides comprehensive well child care to children birth to age 19. In 2012, 187 children received services. Visits may include well child exams, developmental assessments, vision and hearing screenings, nutritional and social service assessments, immunizations and lab tests (iron and lead screenings). Older children may receive physicals in preparation for employment, camp and/or sports. Services are provided based on a sliding fee scale, Medicaid and private insurance.

## Tuberculosis (TB) Program

TB remains a threat in today's society due to international travel and a growing immigrant population. The emerging drug-resistant strains cause even more concern, because this type of infection is more difficult to treat, cure and prevent. The primary goals of the TB program are to control the incidence and spread of active TB and eliminate it as a public health problem. The PHN provides direct patient care, education, surveillance and outreach to attain these goals. The PHN reported two cases of active TB in 2012. The PHN also assessed and treated three individuals with latent tuberculosis infection (those exposed to TB but not having the active disease and not contagious). The PHN works closely with ODH and an Infectious Disease Specialist affiliated with Wright State University and Miami Valley Hospital to ensure adequate and appropriate care. In 2012, 368 Mantoux skin tests were performed.

## Women, Infants & Children (WIC) Program

The WIC program is a federally-funded public health nutrition program for prenatal, postpartum and breastfeeding women and infants and children up to the age of five. WIC provides nutrition assessment, counseling and education, breastfeeding education and support



and supplemental nutritious foods to at-risk, low income residents. WIC is in its 35th year of helping to nourish and educate Greene County moms, babies and young children. WIC-authorized foods and infant formula have been specifically chosen because they are good sources of protein, iron, calcium and Vitamins A and C. These nutrients have been scientifically proven to be lacking or needed in extra amounts in the diets of the WIC population.

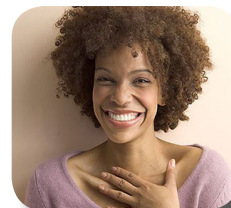
In addition, the Greene County WIC program has been fortunate to be able to take part in a special breastfeeding peer helper project since December 2003. The purpose of the project is to hire current or former WIC participants who have successfully breastfed their own babies to provide breastfeeding promotion and support to WIC mothers and mothers-to-be. In 2012, 58.6% of WIC moms initiated breastfeeding in Greene County.

WIC has a proven track record of improving pregnancy outcomes, reducing infant mortality and providing infants and children with a healthy start in life. This actually saves the government money by reducing Medicaid costs for clients enrolled in the WIC program. The Greene County WIC program provided services to 2,402 participants in 2012.

## Women's Health Services

The goals of this program are to promote and improve access to prenatal care, reduce the rate of pre-term births and increase the number of good birth outcomes.

Pregnancy care, delivery and postpartum care are provided by PHNs, a licensed social worker, dietician and three health care providers including Keith Watson, MD, Katherine Lin, MD, and Scott Bemby, MD. The program served 123 clients during 781 visits in 2012. Currently, GCCHD is the only provider in Greene County of prenatal services to uninsured women.





**Director:**  
*Deborah A. Leopold, R.S., B.S.*

Environmental Health Services are defined by the World Health Organization as: those services which implement environmental health policies through monitoring and control activities. They also carry out that role by promoting the improvement of environmental parameters and by encouraging the use of environmentally friendly and healthy technologies and behaviors. The programs within this Division vary greatly and the Environmental staff works daily to maintain existing programs and increase productivity within others.

## Solid Waste Program

This program handles the licensing and inspections for many programs, including the following: construction and demolition debris, solid waste transfer, compost and hazardous and infectious waste. The program also inspects closed landfills and responds to open dumping complaints.



## Air Pollution Control Program

The Greene County Board of Health contracts with the Regional Air Pollution Control Agency (RAPCA) to monitor the air quality within Greene County and to enforce federal, state and local air pollution control regulations. RAPCA provides air quality monitoring, air

pollution forecasting, pollen and mold reports, indoor air quality programs, field enforcement and the industrial permit program for the citizens of six counties; Greene, Preble, Darke, Miami, Montgomery and Clark

## Household & Semi-Public Sewage Treatment Systems

The Division is responsible for enforcement of the Greene County Household and Small Flow Sewage Treatment System Regulations. In 2012, 23 sites were evaluated for placement and design of on-lot sewage treatment systems, 39 lots were evaluated for malfunctioning systems and 56 new or replacement systems were installed. In addition, 134 sites were inspected under the Operation and Maintenance Program. Staff also investigates complaints regarding the proper disposal and land application of septage. The actual enforcement for land application is performed by the United States Environmental Protection Agency (US EPA) out of the Region Five office in Chicago, Illinois. In 2012, GCCHD staff renewed two requests for sites for land application of septage and inspected 26 vehicles that haul septage.



## Housing Program

The housing program is designed to address unsanitary conditions in houses and apartments within the County. A total of 29 complaints were received in 2012 and 20 have been resolved with nine pending completion at the time of this report. Housing complaints in the City of Fairborn, Beavercreek, Bellbrook and Xenia were referred to their respective jurisdictions as they each maintain their own inspection program.

## Nuisance Abatement & Demolition Program

The Ohio Revised Code requires that nuisances be investigated within each jurisdiction. During 2012, 42 nuisance

complaints were investigated and the owner of each property was cited.

## Plumbing Division

This program enforces the Ohio Basic Plumbing Codes in both residential and commercial facilities. In 2012, staff provided 2,588 inspections, 315 extra inspections, 220 re-inspections and 3,893 consultations. A total of 1,692 permits were issued.

## Private Water Supply

Contaminated water poses a health risk to everyone. This program is designed to inspect and enforce regulations pertaining to private water systems that provide water to individuals when a community supply is not available. In 2012, 51 new private water system permits, 1 test well, 14 well alteration permits and 18 well sealing permits were issued.

In addition to installation inspections, the rules require that a bacteriological water sample be collected and a negative lab result obtained prior to approval. The Division, upon request, will collect water samples for real estate transactions. GCCHD staff was a member of the ODH water work group to provide revisions to the Ohio Private Water System Rules.

## Rabies Control Program

People are exposed to rabies when they are bitten by or come in contact with saliva from an infected animal. All animal bites in the County must be reported to GCCHD. In the case of bats or other wild animals, brain tissue is submitted to the ODH lab for rabies testing. In 2012, staff performed 282 animal bite/exposure investigations. In addition, 44 specimens were sent to the lab in which one bat was positive, 40 were negative and three were deemed non-testable.





## Resident & Day Camps

There are five resident or day camps located in Greene County. Four camps were licensed and operational in 2012 while one camp “rested”. Staff inspects camps for general cleanliness and sanitation of buildings, including exterior camp surroundings. Camper density, sleeping and bathing areas, water supply and sewage treatment systems are all elements of the inspection.

## Recreational Vehicle (RV) Camps & Combined Parks

GCCHD inspects RV camps for camping unit and water supply placement and sewage connections. The parks are also required to provide basic safety items within each camp, as well as monitor and control campers within the park. In 2012, staff inspected and licensed six RV parks and three temporary camps.

## Swimming Pools & Spas

It is the responsibility of GCCHD to license and inspect all public pools and spas in Greene County. Inspections include verifying proper water chemistry along with safety and sanitation issues. In 2012, GCCHD staff provided 30 licenses and inspections for indoor pools/spas, 83 licenses and inspections for outdoor pools/spas and one license and inspection for a bathing beach. Staff also conducted 846 additional inspections, 36 follow-up inspections, 232 consultations and 14 trainings.



## Refuse Transporter, Septage Transporter & Septage Disposal Program

This program regulates vehicles that transport trash. In 2012, 163 trucks from nine companies were inspected.

## Tattoos & Body Piercing

GCCHD staff was responsible for licensing and inspecting ten tattoo and body piercing studios in Greene County

during 2012. Studios are inspected for sterilization of equipment and jewelry, cleaning of body part(s) prior to the procedure, documentation of dyes and jewelry, overall studio sanitation and verification that artists are trained in bloodborne pathogens, first aid and giving the tattoos and/or body piercings.

## Emergency Preparedness

Whether it is a Heat Alert, a biological event like Anthrax or Pandemic Flu, or a natural disaster such as a tornado, GCCHD has written



plans to address its community response. This program covers a variety of activities that enhance not

only GCCHD's emergency response, but also the response of many community partners.

## Institutional Facility Inspection Program

GCCHD staff performed 91 inspections in 45 school buildings in the County this year. The guidelines are set to reasonably ensure that school buildings provide a safe and sanitary environment where children can learn and develop.

There are three jails/detention centers in Greene County. These buildings are inspected upon request in accordance with current Ohio Department of Correction's regulations. In 2012, staff completed one inspection to investigate a complaint.

## Manufactured Home Parks

At manufactured home parks, staff inspects for cleanliness, proper disposal of refuse, location and storage of recreational vehicles and boats and electrical, water and sewer connections. In 2012, staff provided 12 manufactured home park licenses, 23 inspections and six complaints with 15 follow-up inspections.

The responsibility for licensing and regulating all manufactured home parks within the State of Ohio has been transferred from the local health districts to the Ohio Manufactured Homes Commission. The Health District no longer has authority over this program.

## Mosquito Control Program

All Greene County residents benefit from this program. Utilizing Integrated Pest Management techniques, staff investigates complaints and distributes educational information on mosquito control. We also work with ODH for the collection of adult mosquitoes for testing for West Nile Virus (WNV). Fifty-nine pools of mosquitoes were tested for WNV in 2012 in Greene County. Fifty-two were negative and seven were positive.

## Food Protection

Inspecting restaurants, grocery and convenience stores, mobile food units, vending machines and booths at festivals is important for protecting the public's health. Through operator education and the identification of potential problems, GCCHD is able to decrease the risk of food-borne illnesses and reduce food-related outbreaks. Staff remains diligent in educating food managers on proper food handling and sanitation issues to achieve compliance within their facilities. In 2012, GCCHD staff provided 918 licenses for food operations, mobile food units and vending machines, 399 licenses for temporary food operations, 2,418 inspections, 240 follow-up inspections, 157 food complaint inspections, 1,480 consultations and five in-service food training courses.





**Director:**  
**Sara T. Pappa, M.A., MCHES**

The Health Education Division provides a variety of health education and health promotion programs to the community. It is the goal of this Division to assist groups and individuals in making informed decisions regarding personal, family and community health issues.

## HIV/AIDS Testing, Counseling & Education

This comprehensive health education/risk reduction program offers HIV/AIDS prevention services to Greene, Clinton and Fayette County residents with additional support services to Warren County at a total of 16 testing sites. The primary focus is to educate residents about HIV and other Sexually Transmitted Infections (STIs). Staff provides group education, individual counseling, testing and community outreach.

Regular testing and education sites include the following organizations: Women's Recovery Center, Central State University, Wilberforce University, Wright State University, Fayette County Health Department, Clinton County Health Department, TCN Behavioral Health Services, Fayette County Recovery Center, Fayette Alternative School, Wilmington College, Greene County Boys' and Girls' Treatment Centers, Greene County Learning Center and Greene County Independent Living. Additional education opportunities

include: National Black HIV/AIDS Awareness Day events, Greene County Health Fair, National HIV Testing Day and freshman orientation events at local universities.

In 2012, 1,565 people were tested for HIV and 711 received group prevention and educational information. The GCCHD co-hosted the 17th Annual Rural HIV Collaborative Conference for over 210 health care, mental health and social service professionals in September.

Additionally, GCCHD continues to partner with Wright State University, Boonshoft School of Medicine's Substance Abuse Resources and Disability Issues (SARDI) on a five year federal contract from the Substance Abuse and Mental Health Services Administration (SAMSHA) for HIV and substance abuse prevention. The Substance, Testing and Education Program Using Prevention (STEP UP) includes a six session, locally developed interactive substance abuse and HIV prevention peer education program designed specifically for college students at Wright State University (WSU), Central State University (CSU) and Wilberforce University (WU). A total of 192 students have completed the STEP UP peer education program.

## Greene County Safe Communities Coalition

The year 2012 marked the 15th year that GCCHD has been the recipient of a grant from the State of Ohio's Department of Public Safety, Ohio State Highway Patrol Division, Traffic Safety Office. The Safe Communities program continues to address unintentional injuries that are related to traffic crashes in Greene County. Seat belt studies are completed annually in reference to the general public. In 2012, 79.85% of drivers and 87.25% of passengers were wearing their seat belts. The goal is to have at least 85% of drivers belted. The importance of seat belt use is a message that will continue to be emphasized throughout the year.

Distracted driving continues to be a rising problem and cause for many crashes, including fatalities. Cell phone calls and texting are the leading distractions. Staff continue to work with community groups, high schools and law enforcement agencies in an attempt to change local thoughts and behaviors regarding cell phone usage while driving. Mock crashes and health/safety fairs at the local high schools continue to be a primary way to reach young drivers. In 2012, a successful Public Service Announcement video contest for local high schools in a 13 county region was held focusing on the dangers of cell phone use. Over 25 entries were submitted with winners from Yellow Springs High School, Xenia Christian High School, Piqua High School and Springfield High School.

**STOP THE TEXTS.  
STOP THE WRECKS.**

Motorcycle usage appears to be increasing with the rising cost of fuel. In Ohio, all new riders must wear their helmets for one year. Staff shared educational information at various events and festivals throughout the year.

There were 17 fatal crashes in 2012 compared to 11 in 2011. The top five contributing circumstances included exceeding speed limit, failure to control, reckless operation, following too closely and red light running.

The Greene County Safe Communities Coalition continues to work with Greene County jurisdictions and community members to promote safe practices when driving or riding in a vehicle. The Coalition meets bi-monthly and is open to anyone interested in traffic safety.

## Radon Testing

The Radon Testing program continued to provide access to free radon test kits to the residents of Greene County. This is in cooperation with the Regional Air Pollution Control Agency (RAPCA) in Dayton.

## Speakers Bureau

GCCHD maintains a Speakers' Bureau to meet the needs of community





and school groups that are interested in having a speaker on a health-related topic. GCCHD also attends many of the health fairs, community fairs and other festivals and events in the County. The goal of this program is to provide accurate health education to residents as well as information about GCCHD's many programs and services.

## Greene County Healthy Lifestyles Coalition

The Greene County Healthy Lifestyles Coalition continues to meet bi-monthly and is comprised of people committed to increasing health and wellness among Greene County residents. Projects for this Coalition include the Let's Run

### SPRING HAS SPRUNG

HEALTHY FAMILIES 5K RUN/WALK

program (an after school program that trains middle school students

to complete a 5K road race), family fitness challenges, the annual Spring Has Sprung Healthy Families 5K Run/Walk and development of a physical fitness activity guide for County residents. The meetings are open to everyone.

## Help Me Grow Program

Help Me Grow (HMG) is Ohio's birth to age three system that provides state and federal funds to local providers in order to provide Early Intervention and Home Visiting Services to families. Early Intervention refers to services provided to families and their children 0-3 who have special needs due to a diagnosed physical or mental condition or a developmental delay.

In 2010, GCCHD was awarded a grant to provide HMG Service Coordination. Service Coordination is an Early Intervention service provided free of charge to eligible families. By the end of 2012, 333 children were enrolled in the County. Service Coordination include home or center-based visits, family assessments, screenings and assisting families through planning, coordinating, locating and accessing specialized services to meet their child's needs. Prior to children turning three, Service Coordinators also assist families transition to community programs such as public preschool, Head Start,

private preschool or other services as requested.

In 2012, GCCHD was also awarded a contract to provide HMG Home Visitation. Home Visitation is a parent education program provided to expectant first time parents, first time parents with a child under six months of age or a family in active military. Home Visiting services began in January of 2013.



## Greene Community Health Foundation

### 2013 EVENTS

**January 26**

Bowling for Babies



**April 28**

Tugg-A-Truck



**June 29**

Pull for Kids Truck & Tractor Pull

**August 25**

Adopt-A-Healthy Duck Race



**August 31**

Christmas for Kids Car Show



**September 7**

Rusty's Ride Charity Motorcycle Ride



**September 14**

Tugg-A-Truck

**October 19**

Fashion Swap 'N Shop



### GCCHD programs supported by the Foundation:

Benevolent Care, Children's Books, Clinic Cupboard, Local Mini-Grants, Holiday Project, Infant Layettes, Mitten Tree and School Supplies.

Annual fundraisers and contributions from generous and caring donors enable the Greene Community Health Foundation and GCCHD to continue its mission of providing quality services to Greene County residents regardless of their ability to pay.

A heartfelt **THANK YOU** goes out to the following businesses, organizations and individuals for their time, energy and financial commitment over the last year.

Activa Brand Management  
Adams, Nora  
Added Touch Cleaning, Spring Valley  
Advanced Dermatology of Ohio, Dayton  
Alan Besco Cars & Trucks, Xenia  
Ali Industries, Fairborn  
Allen, Connie  
Apple Country Farm Market, Xenia  
Armlovich, Lee & Linda  
Arms, Victoria  
Arrowbrook Baptist Church, Xenia  
Ash, Cheryl  
Austria, Congressman Steve  
Barker's Towing, Washington Courthouse  
Barnes & Noble, Beavercreek  
Barney, Rebecca (Miche Bags)  
Barrett, Lee  
Battle, Donna  
Beaver-Vu Bowl, Beavercreek  
Beeman, Bill & Sandy  
Bellbrook High School  
Berns Garden Center, Beavercreek  
Bethel Lutheran Church  
Bethlehem Lutheran School  
Better Images Portrait Studio, Beavercreek  
BioSource Landscaping, Xenia  
Bistransin, Elaine  
Black, Brenda  
Bob Evans Farms, Xenia  
Bone, Dennis & Iris  
Books & Co., Beavercreek  
Bowersville Church of Christ  
Brannen, Don  
Bright Beginnings, Dayton  
Brinson, Lori  
Brio Tuscan Grille, Beavercreek  
Britton, Bailey  
Buchwalder, Dr. Mark  
Buckminn's D&D Harley-Davidson, Xenia  
Cafferty, Patty  
Cansler, Jane  
Carbide Probes, Inc., Xenia  
Cardiologists of Greene County, LLC, Xenia  
CareSource  
Caribou Coffee, Beavercreek  
Carmichael, Toni  
Caudill, Kim  
Caudill, Mel (Tastefully Simple)  
Cavender, Sue  
C.C. Trailers, Inc., Jamestown  
Cedarville Learning Center  
Cedarville United Methodist Church

Channels, Joleen  
Checkin' the Charts, Dayton  
Cherrybend Pheasant Farm, Wilmington  
Chestnut, Phil & Jana  
Christ Child Society, Dayton  
Cincinnati Reds, The  
Cincinnati Zoo & Botanical Garden  
Classic Country Radio, WBZI AM 1500  
Clifton Mill  
Coca-Cola Refreshments, Dayton  
Cohen, Nancy  
Collett Propane Co., Inc., Xenia  
Collins, Amy  
Collins, Scott  
Coterel, Jr., David  
Country Club of the North, Beavercreek  
Cox, Tammy (Origami Owl)  
Cummings, Melanie  
Curtis, Ryan  
CVS Pharmacy, Xenia  
Davis, Fred  
Davis, Lester & Brenda  
Dayton Auto Race Fan Club, Dayton  
Dayton Dragons Baseball  
Dayton Funny Bone, The, Beavercreek  
Dayton Miami Valley Chapter CPCU Society  
Dayton Society of Natural History  
Delaney, Luwanna  
Derringer, Beavercreek  
Deutsch, Dr. David  
DeVoe, Glenn & Jerri  
Dillaplain, Dr. R.P.  
Discount Smokes, Xenia  
Dodd's Monuments, Xenia  
Downing, Jerry & Edith  
Driver, Barb  
Duchesne, Libby  
Elliott, Cindy (Celebrating Home)  
Elliott, Marlene  
Elmcroft, Xenia  
Enterprise Engine Performance, Thornville  
Evangelical United Methodist Church, Xenia  
Evergreen Children's Center, Beavercreek  
Ewig, D.D.S., Jon  
Fairborn Buick, Pontiac, GMC  
Family Video, Xenia  
Farmers Insurance, John Zeller, Xenia  
Fawcett, Monica & Linda  
Ferrell, Jennifer  
File Sharpening Co., Inc., Xenia  
Filson, Scott  
First Baptist Church, Yellow Springs  
Fischer, Sheriff Gene  
Fisher's Shop, Inc., Xenia  
FitLife, LLC, Xenia  
FitWorks Fitness Center, Beavercreek  
Fosnaugh, Robyn  
Fox, Ed & Laurie  
Frasure, D.D.S., Jerry  
Fraternal Order of Eagles, Beavercreek  
Frisch's  
Geis, Adam, Sherry & Andrew  
Gem City Urologists, Inc., Dayton

Geyer, Robert  
Giga, Sue  
Glacéau Waters (Vitamin Water)  
Glagola, Jean (Perfectly Posh)  
Grand Heights Baptist Church, Fairborn  
Grape Grove Church of Christ, Jamestown  
Gray, Janice & Kayanna  
Greene County Ag Society  
Greene County Community Foundation  
Greene County CVB  
Greene County Juvenile Court  
Greene County Medical Society  
Greene County Newspaper Group  
Greene County Parks & Trails  
Greene County Public Library  
Greene County Roadrunners Club, Xenia  
Greene County Sheriff's Department  
Greene Emergency Medical Services, Inc.  
Greene Memorial Hospital, Xenia  
Greene Towne Center, The, Fairborn  
Greeneview Middle School, Jamestown  
Grooms, Liz  
Grooms, Scott & Tammy  
Gruza, Jackie  
Hackett, Robert  
Hahn, Harry  
Hailey, Cheryl (Blessings Unlimited)  
Half Price Books, Beavercreek  
Handyman Ace Hardware, Xenia  
Hawker United Church of Christ, Beavercreek  
Heather B. Leaves  
Heaven On Earth Emporium, Yellow Springs  
Heidelberg Distributing Co., Dayton  
Heinz Auto Repair, Xenia  
Hendricks, Tina (Velata Fondue)  
Hentrich, Brooke  
Hightower, Melodee (Pampered Chef)  
Hill, Ruth  
Hiney Trucking, Ltd., Xenia  
Holiday Inn Dayton-Fairborn  
Home Run Trucking, Xenia  
Home Site Title Agency, Inc., Xenia  
Homeroft, Inc., Xenia  
Hometown Tire Service, Jamestown  
Hopfer, Becca (Grace Adele)  
Houser, Inc., Dayton  
Huffman, Geraldene  
Hughes, Elaine  
Hunt, Ann  
Hutcheson, Hon. Judge Robert & Mrs.  
IHS Pharmacy, Xenia  
Inscho, Sherri  
Insurance Women of West Central Ohio  
Isaacson, Mark  
Jamestown Church of Christ  
Jamestown Presbyterian Church  
John E. & Betty J. Meyer Family Foundation  
Jones, Dan & Diana  
Kearney, Cheryl  
Keaton, Brenda  
Keller, Sharon (Juice Plus+)  
Kendig, Don & Janet  
Kettering Medical Center Network  
Kil-Kare Speedway, Xenia  
Kindercare Learning Center, Xenia



King & Family, Bobby  
 Klemen, Emily  
 Knauff, Julie (Amway)  
 Knisley Construction, Xenia  
 Knox, Dale & Carol Sue  
 Koehler Counselors Advertising, Yellow Springs  
 Koogler's Septic Tank Pumping Co., Jamestown  
 Kozenko, Jessica (Just Jewelry)  
 Kroger, Xenia & Fairborn  
 Lackey, Beth (Gem City Feng Shui)  
 Ladies of Harley  
 Langford, David  
 Laser Web/Adventure Golf, Dayton  
 Leap Frog's, Dayton  
 Ledbetter, Ann  
 LeGourmet Chef, Jeffersonville  
 Leisring, Janice (Avon)  
 Lesourd & Co., Xenia  
 Liberty Nursing Center, Xenia & Jamestown  
 Lin, Dr. Katherine  
 Linkhart, Lillian  
 Lori's Loft, Belmont  
 Los Mariachi's, Xenia  
 Louderback Plumbing, Xenia  
 Lutz, Teri (My Papparazzi Boutique)  
 Mad River Mountain, Zanesfield  
 Mall at Fairfield Commons, The, Beavercreek  
 Marshall, D.D.S., Lisa  
 Martin, Bill & Martha  
 Martin, Gary & Kim  
 Martin, Jim & Susan  
 Martin, Shari  
 Mayer Farm Equipment, Jeffersonville  
 McCauley, Jason & Regina  
 McDonald's, Xenia  
 McDonnell, Mark  
 McGilly, Pat  
 Meijer, Fairborn  
 Memorial United Presbyterian Church, Xenia  
 Mercurio, Bill & Elaine  
 Meters, Sue  
 Meyer, Cheryl  
 Middleton, The Family of Bob  
 Middleton, Doug  
 Mike's Auction Service, Jamestown  
 Miller, Beverly  
 Millward, Susan  
 Mini University, Fairborn  
 Misty Mountain B&B, Rogers, KY  
 Montgomery Insurance Agency, Xenia  
 Moore, Pam  
 Morris, Carol  
 Murry, Hon. Judge Michael  
 MVH Women's Center  
 MVP Video Creations, Beavercreek  
 Myers, Lisa  
 Neeld Funeral Home, Xenia  
 Neff, Foy  
 Nelson, Mary  
 New Jasper United Methodist Church, Xenia  
 Nikkola, Norma  
 Nick's Restaurant, Xenia

Nonnie Waller's Fine Chocolates, Spring Valley  
 Northside Christian Church, Xenia  
 OB/GYN Associates of Greene County, Xenia  
 Ohio Insurance Services Agency, Inc., Dublin  
 Ohio Renaissance Festival, Harveysburg  
 Old Fort Bank, Xenia  
 Old Timers Club, Clifton  
 Onuoha, Aloysius  
 Papajcik, Jeanette (Tupperware)  
 Pappa, Carol  
 Pappa, Gerard & Sara  
 Pappa, Lucy  
 Parkwood Elementary, Beavercreek  
 Parson's Hook Road Body Shop & Towing, Xenia  
 Partee, Jannie  
 Peace of our Savior Church, Vandalia  
 Perales, Rick  
 Perry, Clyde  
 Pet Perfection, Xenia  
 Phillips, Dennis & Sharon  
 Phoenix Restaurant, Jamestown  
 Pike, Dee & Sue  
 Pinewood Village, Xenia  
 P.O.D.S, Florida  
 Powers Funeral Home, Jamestown  
 Premier Fitness, Dayton  
 Pummill, Lori  
 Rave Motion Pictures at The Greene, Beavercreek  
 Reddy Electric, Xenia  
 Reed, Julie  
 Reeder, Adeline (Just Jewelry)  
 Reese, Mary (Premier Designs)  
 Reporter, Shernaz  
 Rickels, Joyce  
 Rickels, Kim  
 Rogers, Krista  
 Rohrback, Charlie, Glenna & Bonnie Jo  
 Rolston, Jo (JoRo Designs)  
 Root, Hon. Judge Beth  
 Roth, Lauren  
 R.W. Louderback & Son Plumbing Co., Xenia  
 Sagers, Larry & Jenny  
 Salon Creations, Xenia  
 Salon EXP, Beavercreek  
 Saunders, Mindy  
 Scene 75, Vandalia  
 Schairbaum, Rick  
 Schmitt, Amy  
 Security National Bank, Xenia  
 Seilhamer, John & Brenda  
 Shannon, D.D.S., Nick J.  
 Shetterly, Glenna (Tupperware)  
 Shoemaker, Charles  
 Simply W.O.M.E.N. Dayton  
 Smith, Caryol  
 Smith, John & Connie  
 Smith, Ruth  
 Snyder, Ralyn (Thirty-One)  
 Spring Valley Baptist Church  
 Spring Valley Gardens, Spring Valley

St. Brigid Catholic Church, Xenia  
 St. Luke Parish & School, Beavercreek  
 Star Pediatrics, Xenia  
 Stewart, Dr. Wanda  
 Stimmel, Mike & Karen  
 Stormont, Dylan  
 Sweets Boutique, LLC, The, Xenia  
 Tackett, Jill (Pink Zebra)  
 Tecumseh Outdoor Drama, Chillicothe  
 Thomas, Rebecca  
 Tiffany Jewelers, Xenia  
 Tim Horton's/ColdStone Creamery, Xenia  
 Tractor Supply Co., Beavercreek  
 Trophy Sports, Xenia  
 TruPointe, Xenia  
 Twist, Inc., Jamestown  
 VanTress, Linda  
 VanWinkle, Shauna  
 Vectren Dayton Air Show  
 Victory Temple Baptist Church, Fairborn  
 Victoria Theatre Association, Dayton  
 Vitullo, D.D.S., Ronald  
 Wagner, Tina (Mary Kay Cosmetics)  
 Walmart, Xenia  
 Ward, Karen  
 Warner Middle School, Xenia  
 Watson, Dr. Keith  
 Waymire, Cari (Scentsy)  
 Wayside Chapel, Beavercreek  
 WDTN-TV/Dayton's CW  
 Westminster Presbyterian Church, Xenia  
 WHIO-TV 7  
 Wickline's Florist & Garden Center, Xenia  
 Wolaver, Hon. Judge Stephen  
 Wynn, Sheryl  
 Xenia H.O.G. Chapter #2703  
 Xenia Nazarene Christ Learning Center  
 Xenia Shoe & Leather, Inc.  
 Xenia Township Fire Department  
 XWARN  
 Yellow Springs High School  
 Young's Jersey Dairy, Yellow Springs  
 YMCA of Greater Dayton, Beavercreek  
 YMCA of Greater Dayton, Xenia  
 YS Federal Credit Union, Yellow Springs  
 YSHS Knitting Club  
 YSI Incorporated, Yellow Springs  
 Zoar United Methodist Church, Xenia  
 Zryd, M.D., Teresa



*Thank you to our many generous donors and sponsors. We couldn't do it without YOU! The Development Office makes every attempt to include all donors. Please call 937-374-5600, ext. 5658 or 5669, or 1-866-858-3588 for additions or corrections.*

# General Information

## Office of Vital Statistics

GCCHD receives, records and maintains all birth and death certificates for Greene County from December 1908 to the present. Certificates are recorded in the county in which the birth or death occurs, regardless of place of residence. Birth and death certificates are available in standard size for a fee of \$24.00 per certified copy. Birth certificates are available at GCCHD for births that occurred in any county in Ohio.

<u>Greene County Births</u>	<u>2012</u>	<u>2011</u>
WPAFB Hospital	439	475
Greene Memorial Hospital	7	0
Soin Hospital	172	0
Home Births	8	6
<b>TOTAL</b>	<b>626</b>	<b>475</b>

<u>Causes of Death</u>	<u>2012</u>	<u>2011</u>
Heart Disease	415	316
Cancer	191	171
Respiratory	86	87
Alzheimers	53	161
Genito-Urinary	49	54
<i>Accidents:</i>		
Traffic	7	11
Other	29	29
Digestive	7	10
Suicide	13	13
Nervous System	18	20
Prematurity	0	1
AIDS	1	0
Undetermined	3	2
<i>Homicide:</i>		
Traffic	0	0
Other	4	2
Alcoholism	3	0
Other	23	20
<b>TOTAL</b>	<b>902</b>	<b>897</b>

## 2012 Board of Health Members

### Board Member

### Jurisdiction

<i>Nancy Terwoord, President</i>	Fairborn
<i>Denise Percival, Vice President</i>	Xenia
William O. Beeman	Bellbrook
Anita Crosswhite	Member at Large
Scott Filson	District Licensing Council
Walter Gilliard, PhD	Beavercreek
Scott Hammond	Member at Large
June Johnson	Xenia
Melvin Johnson, PhD	Member at Large
Charlene Montague	Beavercreek
Kathy Saunders	Member at Large
Thomas L. Selden	Member at Large
David Thompson	DLC Alternate
Teresa W. Zryd, M.D.	Fairborn

## 2012 Board of Trustees Greene Community Health Foundation

*Mark A. McDonnell, President*  
*Aloysius O. Onuoha, Treasurer*  
*Sara T. Pappa, Secretary*

Bill Beeman	Penny
Marlene Elliott	Madry-Johnson
Laurie Fox	Janine Partee
Sue Giga	Dee & Sue Pike
Dale & Carol Sue	Tina Slone
Knox	Becky Womack

## Most Popular Baby Names of 2012

*Boys: William & Liam*  
*Girls: Emma & Ava*

## District Advisory Council

The GCCHD serves the townships, villages and contract cities of the County. The chief executive of each of the villages, the president of the Board of County Commissioners and the chairperson of each township's Board of Trustees are the designated members of the *District Advisory Council*. They are required by law to meet annually in March, and their statutory powers and duties include selecting Board of Health members, considering special reports from the Board of Health and reviewing GCCHD's budget.

### **2012 OFFICERS:**

*Chris Mucher, President*  
*Carol Graff, Vice President*  
*Nadine Daugherty, Secretary*





# Administrative Services

Director: Aloysius Onuoha, M.B.A., M.H.A.



This Division operates under the directives, rules and regulations of the Ohio Revised Code, Laws and Rules, Section 504 of the Rehabilitation Act of 1973 as amended, Title VI of the Civil Rights Act of 1964, and the Public Health Standards for local health departments.

The Administrative Services Division is charged with the responsibility for providing: (1) budgeting and finance; (2) purchasing; (3) personnel; and (4) assets and facilities management for GCCHD. The following table shows the Health District's income, expenses and fund balance for the periods ended December 31, 2012 and 2011 respectively.

## GCCHD CASH BASIS REVENUE AND EXPENDITURE REPORT

for the periods covering 1/1/12 - 12/31/12 and 1/1/11 - 12/31/11

Executive Summary - Condensed - Comparative

	2012 Actuals	% of Totals	2011 Actuals	% of Totals	Difference in \$	Difference in %
<b>REVENUES</b>						
.8/.5 Mil Levy	\$2,986,378	36%	\$1,783,862	26%	\$1,202,516	67%
Clinic Fees	\$210,067	3%	\$273,647	4%	(\$63,580)	(23%)
Vital Stats Fees	\$180,202	2%	\$178,013	3%	\$2,189	1%
Subdiv./Contracts	\$355,628	4%	\$355,628	5%	-	-
Licenses/Permits	\$966,146	12%	\$968,226	14%	(\$2,080)	-
Grants - All	\$1,671,436	20%	\$1,821,619	27%	(\$150,183)	(8%)
<b>Sub Total</b>	<b>\$6,369,857</b>	<b>77%</b>	<b>\$5,380,995</b>	<b>79%</b>	<b>\$988,862</b>	<b>18%</b>
<b>Transfers In</b>	<b>\$1,881,118</b>	<b>23%</b>	<b>\$1,391,516</b>	<b>21%</b>	<b>\$489,602</b>	<b>35%</b>
<b>Total Revenues</b>	<b>\$8,250,975</b>	<b>100%</b>	<b>\$6,772,511</b>	<b>100%</b>	<b>\$1,478,464</b>	<b>22%</b>
<b>EXPENDITURES</b>						
Staff Salaries	\$3,143,788	42%	\$3,030,977	47%	\$112,811	4%
Fringe Benefits	\$1,133,045	15%	\$1,064,800	16%	\$68,245	6%
Materials/Supplies	\$221,815	3%	\$193,886	3%	\$27,929	14%
Contracts	\$279,415	4%	\$176,170	3%	\$103,245	59%
Travel & Training	\$53,893	1%	\$62,173	1%	(\$8,280)	(13%)
Advertising & Printing	\$40,756	1%	\$39,877	1%	\$879	2%
Equipment & Vehicles	\$126,443	2%	\$95,550	2%	\$30,893	32%
Other Operating Expenses	\$643,511	7%	\$493,322	7%	\$150,189	30%
<b>Sub Total</b>	<b>\$5,642,666</b>	<b>75%</b>	<b>\$5,156,755</b>	<b>79%</b>	<b>\$485,911</b>	<b>9%</b>
<b>Transfers Out</b>	<b>\$1,881,118</b>	<b>25%</b>	<b>\$1,391,516</b>	<b>21%</b>	<b>\$489,602</b>	<b>35%</b>
<b>Total Expenditures</b>	<b>\$7,523,784</b>	<b>100%</b>	<b>\$6,548,271</b>	<b>100%</b>	<b>\$975,513</b>	<b>16%</b>
Excess (Deficit) Rev./Exp.	\$727,191		\$224,240		\$502,951	1.58%
Carryover from Prior Yr.	\$2,896,406		\$2,614,664		\$281,742	11%
<b>Fund Balance 12/31/2012 &amp; 2011</b>	<b>\$3,623,597</b>		<b>\$2,838,904</b>		<b>\$784,693</b>	<b>25%</b>

## FUND BALANCE OR CARRYOVER

Fund balance or carryover balance as it applies to GCCHD does not represent "excess revenue" or "surplus cash" in the bank. Essentially, it represents a mix of revenues from all sources that were not expended after GCCHD closed its books. These unexpended revenue mix or carryover balances are comprised of the following: (1) grant revenues that may be refunded if unspent after the end of the grant period; (2) restricted revenue funds that cannot be utilized for other purposes; and (3) general health tax revenue funds that are partly used to subsidize other state-mandated public health core services, including indigent care services. By the end of the 2012 operating period, the fund balance was \$3,623,597 compared to \$2,838,904 in 2011.

A detailed copy of GCCHD's Annual Financial Statement (2012 versus 2011) for all funds is available by contacting Aloysius Onuoha at 937-374-5628 or [aonuoha@gcchd.org](mailto:aonuoha@gcchd.org).

GCCHD would like to thank all public officials and Greene County residents for their continued support and involvement in ensuring the financial stability of GCCHD.

# Greene County Combined Health District

## Main Office

360 Wilson Drive • Xenia, OH 45385  
937-374-5600 • toll free: 866-858-3588  
fax: 937-374-5675

Hours: Monday-Friday, 8:00am - 4:00pm

Late Clinics: 2nd & 4th Thursday of every month, 4:00 - 6:00pm

## Fairborn Immunization & WIC Clinics

600 Pierce Drive • Fairborn, OH 45324  
937-879-4093

Immunizations: 3rd Thursday of every month, 9:00am - 12:30pm

WIC: Mondays & Wednesdays, by appointment only.



**Visit our brand new website at [www.gcchd.org](http://www.gcchd.org)**

**You can also find the Greene County Combined Health District on Facebook!**

## Health Services Available

- BCMH - Bureau for Children with Medical Handicaps
- Blood Pressure Screenings
- Communicable Disease Program
- Dental Clinic
- Emergency Preparedness & Planning
- Environmental Health Services
- Greene County Healthy Lifestyles Coalition
- Greene County Safe Communities
- Help Me Grow Program
- HIV/AIDS Counseling/Testing
- Immunization & Flu Clinics
- Overseas Travel Clinic
- Radon Test Kits
- Reproductive Health & Wellness Clinic
- Speakers' Bureau
- TB Program
- Vital Statistics
  - Birth & Death Certificates
  - Burial Permits
- Child & Adolescent Health Clinic
- WIC - Women, Infants and Children Nutrition Program
- Women's Health Services



## What is Public Health?

The public health system is made up of government agencies and private organizations that work to:

- Prevent epidemics and the spread of disease
- Protect against environmental hazards
- Prevent injuries
- Promote and support healthy behaviors
- Respond to disasters and assist communities in recovery
- Assure the quality and accessibility of health services.

Although public health organizations work closely with medical and social service providers, the field of public health is distinctly focused on prevention of health problems before they occur, populations and groups rather than individual patients and all factors that affect health, including socio-economic factors and the physical environment.



## Medical Reserve Corps

The Greene County Medical Reserve Corps (MRC) unit has been developed to support public health and assist with mass vaccination clinics during a public health emergency. Free training is provided for volunteers, allowing medical professionals and non-licensed persons to volunteer. GCCHD encourages all interested volunteers to sign up at [www.ohioresponds.gov](http://www.ohioresponds.gov) or call GCCHD at 937-374-5600.



### How Can You Get Involved?

- Visit [www.ohioresponds.gov](http://www.ohioresponds.gov), click on the Volunteer Registry link at bottom of page to view programs in your area and register as a volunteer.
- Contact the Greene County MRC Coordinator, Don Brannen, for registration instructions at 937-374-5660.
- Contact the Ohio MRC State Coordinator: (614) 644-6133 or by email at [mrc@odh.ohio.gov](mailto:mrc@odh.ohio.gov).
- Visit the National MRC website at [www.medicalreservecorps.gov](http://www.medicalreservecorps.gov).



**Mark A. McDonnell**  
*Health Commissioner*

**R.P. Dillaplain, M.D.**  
*Medical Director*

**Sara T. Pappa**  
*Editor-In-Chief*

**Laurie Fox**  
*Editor, Layout/Design*